



**ELECTRICAL
TURNKEY
CONTRACTOR**

www.efra.co.in



About Us

Efra Projects LLP is a leading company specializing in the comprehensive execution of supply, installation, testing, and commissioning (SITC) projects in the fields of electrical, instrumentation, civil structure, and associated systems. With a team of seasoned professionals boasting over two decades of experience in the electrical industry, Efra Projects LLP has established itself as a trusted and reliable partner in delivering high-quality and efficient solutions.

Our company's expertise extends across a wide range of sectors, including commercial, industrial, residential, and infrastructure projects. Efra Projects LLP is known for its commitment to excellence, ensuring that every project is completed with utmost precision and adherence to industry standards.

Efra Projects LLP places a strong emphasis on customer satisfaction, prioritizing open communication, timely execution, and cost-effective solutions. By leveraging our technical expertise and innovative approaches, we consistently deliver projects that meet and exceed client expectations.



Value System & Philosophy

At Efra, we put great emphasis on six core values that we call the foundation of our belief system. they are as follows:

INTEGRITY

Demonstrating honesty, transparency, and ethical behavior in all actions and decisions.

WORKMANSHIP

We must organise high quality of workmanship in our services.

COLLABORATION

We Collaborate across teams, functions, businesses and borders to deliver the best work.

AGILITY

Adapting to change and quickly responding to market needs and challenges.

SAFETY

Prioritizing the safety and well-being of employees, customers, and the community.

QUALITY

Maintaining high standards in all aspects of the business to ensure customer satisfaction.



EFRA has evolved as a EPC Electrical & Instrumentation catering to the following business verticals.

- Switchyard up to 220kV
- Plant Electrical & Instrument work
- Industrial E&I Project
- Industrial Lighting Projects
- EV Charging stations
- Data centers
- Smart City Projects
- Power Plants & Refinery
- Commercial Project
- Airport, Metro & Bullet Train Project



Switchyard up to 220kV

GLIMPSES - 220/33KV SWITCHYARD

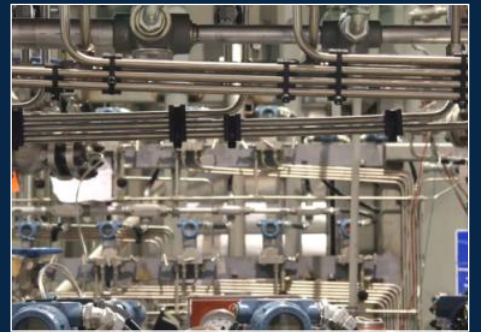
X'MER FOR 890MW, 300MW ,320MW & 100MW SOLAR PLANT



Plant Electrical & Instrument work

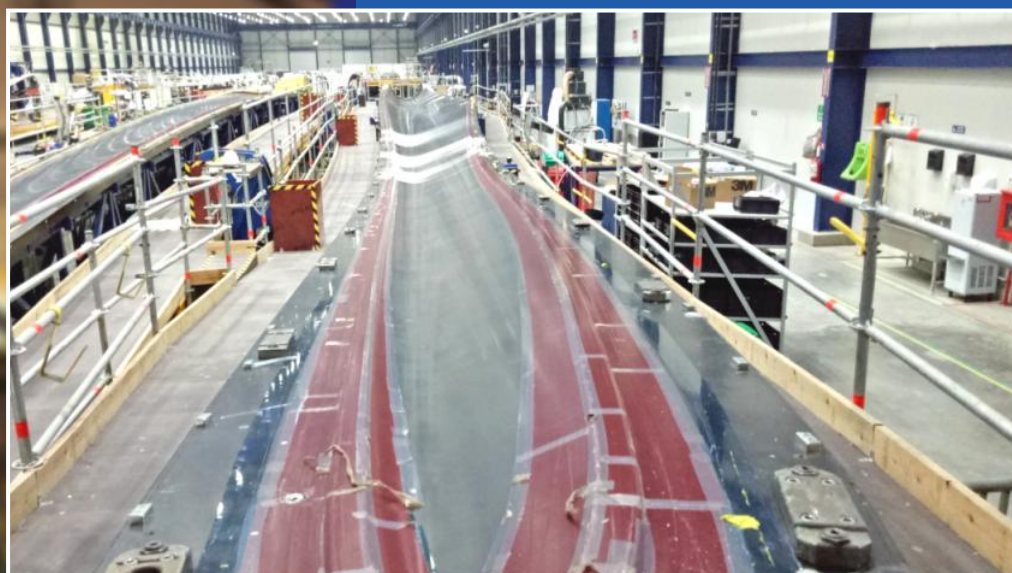
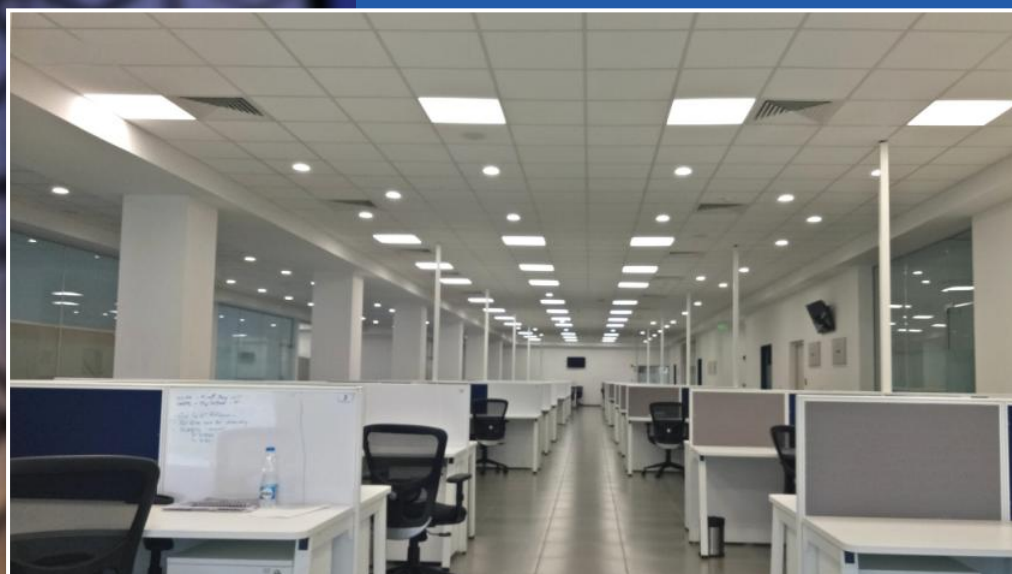


Industrial E&I Project



Industrial Lighting Projects

GLIMPSES OF VARIOUS SITE ACTIVITIES



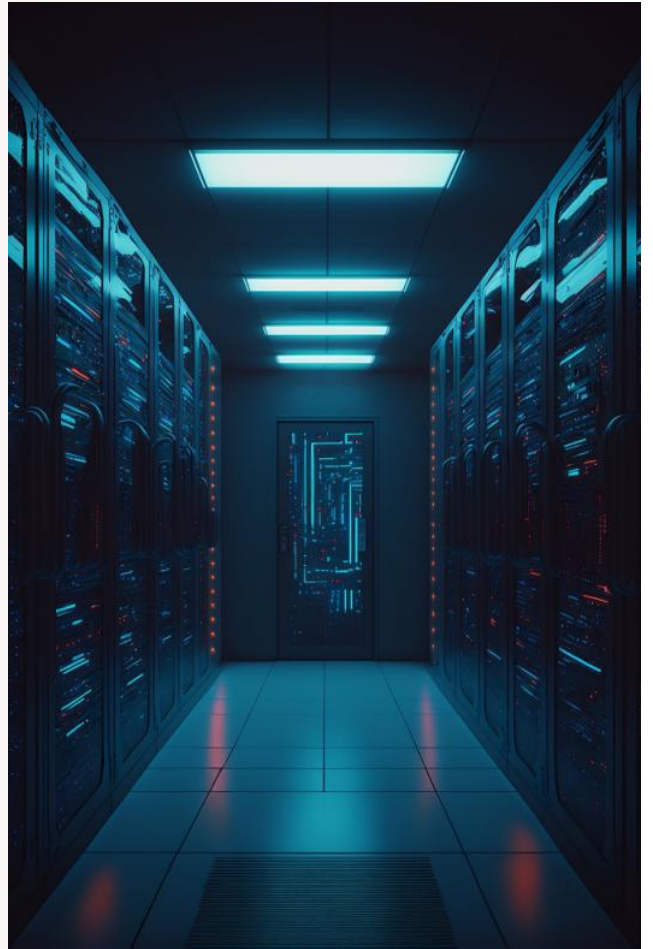
EV Charging stations

GLIMPSES OF VARIOUS SITE ACTIVITIES



Data centers

GLIMPSES OF VARIOUS SITE ACTIVITIES



Smart City Projects

GLIMPSES OF VARIOUS SITE ACTIVITIES



Metro & Bulet Train Project

GLIMPSES OF VARIOUS SITE ACTIVITIES





Safety Declaration

- We declare that companies commitment that safety & Occupational Health of the employees is matter of prime concern to the company and the company reiterates its intension as under.
- All the statutory requirement pertaining to safety & Health prescribed under the provision of Factories Act and Rule shall be complied with.
- The company shall establish suitable norm for safety and cleanliness, where the employees of the company shall render their services.
- The company shall give due weight age to each individual's contribution in maintaining safety and clean environment while evaluating the overall performance report of an employee for his career advancement

Health, Safety & Environment

We empower our people to:

- Intervene when they witness any 'at-risk' behavior
- Lead by example
- Identify and manage hazards associated with the activities for which they are responsible
- Courageously and honestly report all accidents and hazards
- Take the time to do things right; do the job safely or not at all – do not cut corners

Why Choose Us ?

At eFRA, we are committed to delivering solutions that are customized according to the needs of your organization.



1. Diversified Experience

We have executed projects for a wide range of manufacturing industries, commercial establishments and power plants.



2. Professional Team

50+professional team strength.



3. Green Energy

We believe that the future belongs to clean energy and are committed to solar, wind and hydro-electricity.



4. Health & Safety

Health and safety play an important role and is built into our business DNA. The Philosophy of care and safety is adapted by our entire workforce, who remain vigilant to ensure that projects are executed without accidents.

We Are Specialists In
Electrical Quality Work



SMART CITY & SMART GRID SOLUTION

We Are Authorized Channel Partners

PHILIPS

SIEMENS


HAVELLS

 **KABEL**

Raychem RPG
ENGINEERING GROWTH. PIONEERING EXCELLENCE

 **PRECISION**
Pipes & Fittings


dowell's

Panasonic

 **legrand**



**We have own
Manufacture of Cable
Tray and Lighting Pole,
Lighting Fixture.**

eFRA
Industries



Efra's Prominent Clients

adani



AVAADA

JBM Group
Our milestones are touchstones

LARSEN & TOUBRO

merino
ECONOMY ♦ EXCELLENCE ♦ ETHICS

Garden*
VARELI

Reliance
Industries Limited

TATA

STERLING & WILSON

URC
Building Values

WAAREE
One with the Sun

“

**Our Power system expertise enlightens
lives of millions by providing access
to electricity.**



LISTEN BETTER
PLAN BETTER
BUILD BETTER

Contact Us

+91 93139 22323

projects@efra.co.in

19 Soma Kanji Ki Wadi, Near Savera
Complex, Khatodara Surat - 395002



Scan QR Code
for visit our website